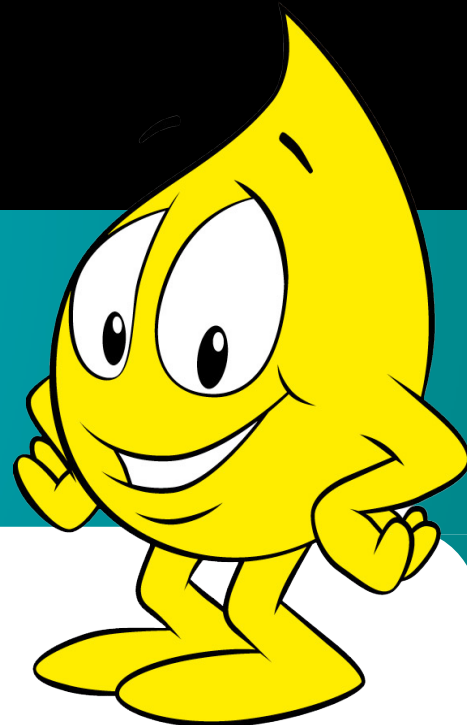




Graduate School of Education

# PIPS Newsletter 2013

Performance Indicators in Primary Schools



## Welcome

This newsletter is designed to share questions, queries, feedback and any news regarding PIPS.

### Staff Announcements

#### Updates from the PIPS Coordinator

Welcome to all PIPS schools in 2013.

Everyone should have had a chance to download their feedback from AusPIPS by now and be using the information to better inform their classroom activities. Don't forget to keep a backup of your data somewhere safe, ready for the Final Assessment later in the year. Keep an eye on our website for any updates so you'll be up to speed in October!

[www.education.uwa.edu.au/pips](http://www.education.uwa.edu.au/pips)

Cheers,

Vivienne Pepper

[vivienne.pepper@uwa.edu.au](mailto:vivienne.pepper@uwa.edu.au)

#### From the PIPS Research Officer

Hello to all the PIPS schools for 2013!

It was great to meet so many of you at the workshops earlier this year and I hope to see many new faces and some old faces returning to the second round for the year in November. If you can't make it to a workshop, I'd strongly recommend that you have a look through the IDEAS+ section of the PIPS manual as this will provide you with valuable new techniques for analysing and getting the most out of your PIPS data.

Kind regards

Ye'elah Berman

[Yeelah.Berman@uwa.edu.au](mailto:Yeelah.Berman@uwa.edu.au)

### Who used PIPS in 2013?

This year saw 625 schools undertake PIPS testing across Australia. Over 24,000 students have been assessed so far. We look forward to welcoming more schools each year. The PIPS Baseline assessment provides a valuable tool for planning in the classroom, and monitoring school wide trends over the years.

### REMINDER: Undertake the Final Assessment between:

ACT (government)	21st October-1st November
NSW, QLD, TAS, VIC, NT	14th October-25th October
TAS (government)	21st October-1st November
WA	14th October-25th October

### Transferred students

Now is a great time to ensure your PIPS database is up to date and includes all the students in your class. If you've had some new transferred students arrive since the First Assessment, it's important to check if they have been assessed at their previous school. If data does exist, the team at PIPS can email you a copy. A quick and easy import of the file is all that's needed to add that student (and all their data!) into your class. Come October you'll be ready to complete PIPS with each child.

The Transferred Student form is available on page 81 of the PIPS manual.

### Accessing Your Feedback

PIPS feedback is only available on our AusPIPS website and can be downloaded anytime. To access the site you'll need your PIPS ID and AusPIPS password, both of which can be found inside the 2013 PIPS manual. To download feedback, use the Results/Analysis tab and select "Feedback".

<http://www.education.uwa.edu.au/pips/current/plus>

#### PIPS Contacts

Project Director: Professor Helen Wildy  
 PIPS Project Coordinator: Ms. Vivienne Pepper  
 PIPS Research Officer: Ms. Ye'elah Berman  
 Queries: (t) 08 6488 2859  
 (f) 08 6488 1052

Visit our website to download this newsletter or find out more info on PIPS:

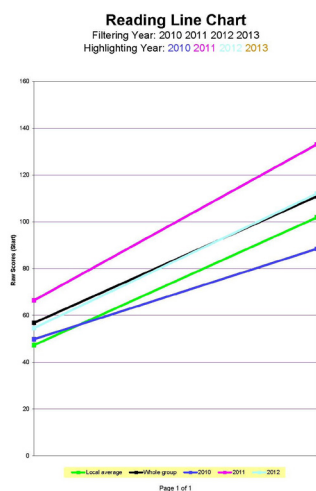
<http://www.education.uwa.edu.au/pips>



## IDEAS+

IDEAS+ is a free download for all PIPS schools in addition to their standard PDF feedback file. IDEAS+ is a more customizable way of looking at your data, with additional graphs and charts.

IDEAS+ is downloaded with your current years data, as well as all historical data for as long as your school has been involved with PIPS. You can create the graphs and charts that most interest you, either as a classroom teacher or administrator.



Reading Line Chart showing a particularly strong cohort in 2011.

Data can be filtered to show particular years, classes and groups. Graphs can then be highlighted to better show the gender, group, class... whatever you want to look at in more detail!

More information on how to download the IDEAS+ program, as well as instructions on how to create many of the popular graphs can be found on the PIPS website at <http://www.education.uwa.edu.au/pips/current>

Your schools IDEAS+ file is stored at AusPIPS and can be downloaded for free whenever it is needed.



Box and whisker plot highlighting Reading Groups.

## Continuing to build student profiles with InCAS

The Interactive Computerised Assessment System (InCAS) tool allows you to continue gathering computerised assessment data on students right through to Year 10.

Students can be profiled on:

- Reading
- Word recognition
- Word decoding
- Spelling
- Comprehension
- Mathematics
- General maths
- Mental arithmetic
- Developed Ability
- Picture vocabulary
- Non-verbal ability

For more information, visit our website

[www.education.uwa.edu.au/incas](http://www.education.uwa.edu.au/incas)

or send an email

[Yeelah.Berman@uwa.edu.au](mailto:Yeelah.Berman@uwa.edu.au)



**THE UNIVERSITY OF  
WESTERN AUSTRALIA**  
*Achieving International Excellence*