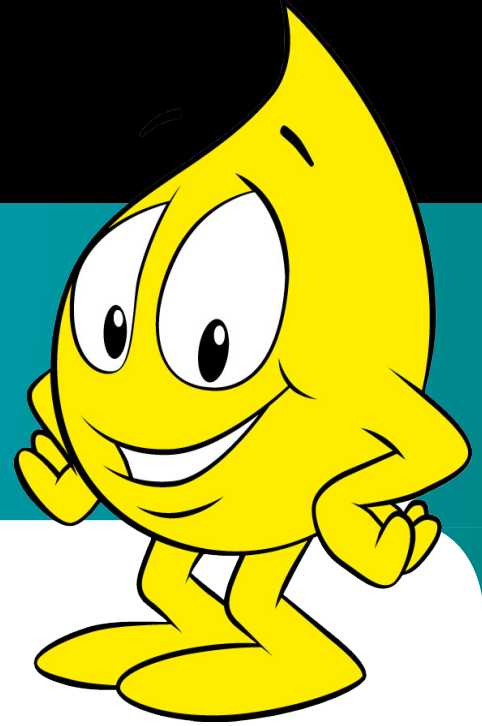




Graduate School of Education

PIPS Newsletter 2014

Performance Indicators in Primary Schools



Welcome

This newsletter is designed to share questions, queries, feedback and any news regarding PIPS.

Staff Announcements

Updates from the PIPS Coordinator

Welcome to all PIPS schools in 2014.

There's a lot of changes happening this year, the most exciting is that we will be moving towards bringing PIPS online for the 2015 assessments! More information is over the page.

The Final Assessment isn't too far away, so make sure the backup copy of your data is safe and sound, PIPS is loaded on your computer and you're ready to go!

www.education.uwa.edu.au/pips

Cheers,

Vivienne Pepper

vivienne.pepper@uwa.edu.au

From the PIPS Research Officer

Hi Everyone!

I'm now in my third year working as the PIPS Project Officer and it's great to have been involved in the workshops and to see all the ways in which staff are using the data to inform their teaching.

I look forwards to working with you in future years.

Kind Regards

Ye'elah Berman

Yeelah.Berman@uwa.edu.au

Who used PIPS in 2014?

This year saw 605 schools undertake PIPS testing across Australia. Over 24,000 students have been assessed so far. We look forward to welcoming more schools each year. The PIPS Baseline assessment provides a valuable tool for planning in the classroom, and monitoring school wide trends over the years.

REMINDER: Undertake the Final Assessment between:

ACT (government)	20th October-31st October
NSW, QLD, TAS, VIC, SA, NT	13th October-24th October
TAS (government)	20th October-7th November
WA	13th October-24th October

Accessing Your Feedback

PIPS feedback is only available on our AusPIPS website and can be downloaded at any point during the year. Your PIPS ID and AusPIPS password are found inside the 2014 PIPS manual, you'll need these to access the site. Also, remember to download IDEAS+ for free from AusPIPS and really use the data you've collected.

www.education.uwa.edu.au/pips/current/plus

Student database checks

Don't forget to make sure your student database/ student listing within PIPS is current. If you've had new students come to your school since the First Assessment, it's important to check if they have been assessed at their previous school. If data does exist, the team at PIPS can email you a copy. A quick and easy import of the file is all that's needed to add that student (and all their data!) into your class. Your database will be complete and you'll be ready to undertake the Final Assessment in October. The Transferred Student form is available on page 81 of the PIPS manual

PIPS Contacts

Project Director: Professor Helen Wildy
PIPS Project Coordinator: Ms. Vivienne Pepper
PIPS Research Officer: Ms. Ye'elah Berman
Queries: (t) 08 6488 2859
 (f) 08 6488 1052

Visit our website to find out more info on PIPS:
<http://www.education.uwa.edu.au/pips>



Changes to PIPS in 2015

There are exciting changes planned for next year, and we're working towards bringing PIPS online. An improved user interface will be developed, making PIPS easier to use and look great.

By bringing PIPS online, this will also allow more flexibility with the devices the assessment runs on. We're aiming for PIPS to run smoothly on iPad, Tablet, PC and Mac, allowing more options for teachers to use the device of their choice and integrate PIPS into the already established classroom technology.

This will be a major undertaking, with a lot of work from our program developers in the UK, and here at PIPS Australia. The current manual will be updated to ensure that support will be available as the changes are implemented. As usual, the PIPS support team will be available over email or phone if you're having any troubles.

We're very excited about this big change to PIPS, keep an eye on our website for updates and news as it happens.

Teacher Survey

This year, PIPS Australia are collecting additional data from teachers regarding students who were unable to correctly answer ANY (i.e. received a score of zero) of the new Easier Reading (Bedroom screen) **and/or** the Phonics screens.

We are interested to know why those students may be having trouble. This additional data will help us with our future planning.

If any of your students fall into this category, we'd love to hear from you. Please download and fill in the form available at www.education.uwa.edu.au/pips/current/teacher-survey then email or post to PIPS Australia.

We've received some responses from the First assessment, but are still accepting your information. Come the Final Assessment, we'll again be asking teachers to fill in the form if they have any students who score zero in the Easier Reading, screen, and/or zero on the Phonics section.

All data will be de-identified before being examined, and kept confidential.

Continuing to build student profiles with InCAS

The Interactive Computerised Assessment System (InCAS) tool allows you to continue gathering computerised assessment data on students right through to Year 10.

Students can be profiled on:

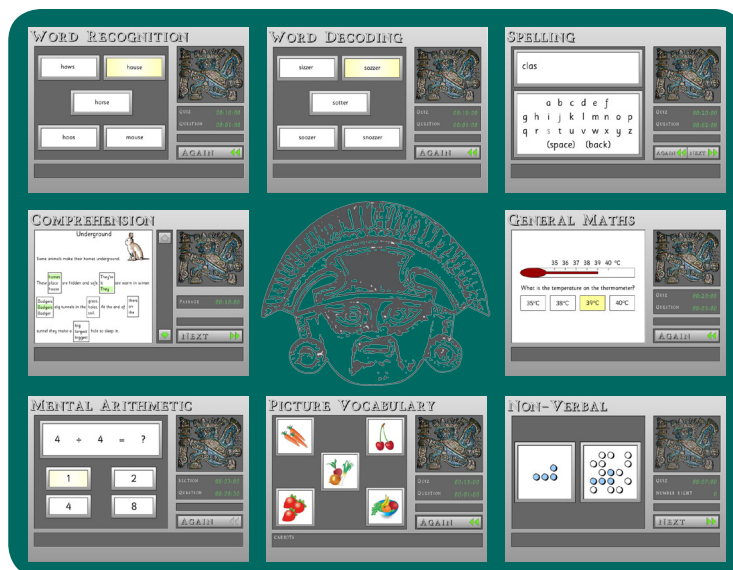
- Reading
- Word recognition
- Word decoding
- Spelling
- Comprehension
- Mathematics
- General maths
- Mental arithmetic
- Developed Ability
- Picture vocabulary
- Non-verbal ability

For more information, visit our website

www.education.uwa.edu.au/incas

or send an email

Yeelah.Berman@uwa.edu.au



**THE UNIVERSITY OF
WESTERN AUSTRALIA**
Achieving International Excellence